



---

## **INSTALLATION & OPERATION MANUAL**

### **Roll Over Protective Structure (ROPS) Model 98210001**

**Wright Manufacturing, Inc.**  
*2-Post folding ROPS assembly and mounting hardware*

---

**IMPORTANT!**  
**READ INSTRUCTIONS CAREFULLY BEFORE OPERATION**

---

## INSTALLATION INSTRUCTIONS FOR ROLL-OVER PROTECTION SYSTEM (ROPS)

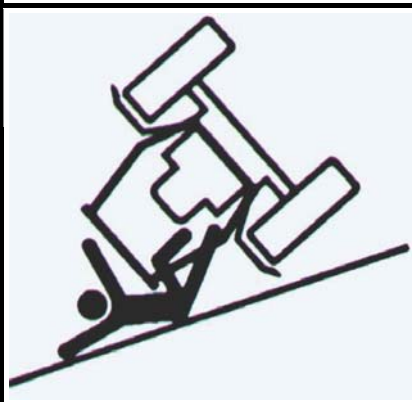
This manual contains assembly, operating, maintenance and safety instructions for your ROPS. Before installing the ROPS or operating a machine equipped with a ROPS, carefully read these instructions completely. The ROPS will reduce the risk of serious or fatal injury in the unlikely event of a tip over although the system cannot protect the operator from all possible injuries. By following the operating, maintenance, and safety instructions, you will prolong the life of the machine and the ROPS, maintain its maximum efficiency and promote safe operation.

If additional information is needed, contact your authorized equipment dealer or distributor. **Keep this manual with the machine operator's manual for future reference.**

**IMPORTANT:**

1. Do not cut, drill, modify or repair ROPS in any manner.
2. Always replace a damaged ROPS.
3. Always use the seatbelt and ROPS together.
4. Frequently inspect roll bar and seat belts for damage or loose hardware.
5. Use extreme care when working close to fences, ditches, trees and on hills.
6. Check overhead clearances carefully before driving under any objects.
7. Do not leave operator's position while unit is running.
8. Do not carry riders.
9. If ROPS is a folding ROPS, ROPS should be in the upright position and pinned when operating the machine.

**WARNING!** This ROPS is certified for use on machines with a maximum gross vehicle weight (GVW) of 2300 LBS. The GVW INCLUDES the weight of the base machine, operator, fuel, ROPS, and other attachments and payloads. When attachments are added, causing the GVW of the machine to be more than 2300 LBS., the ROPS may not provide adequate protection resulting in serious injury or death. Use caution when installing attachments and **DO NOT EXCEED** the GVW rating of the ROPS.



**WARNING!**  
**SERIOUS INJURY OR DEATH MAY RESULT FROM  
MACHINE ROLLOVER**

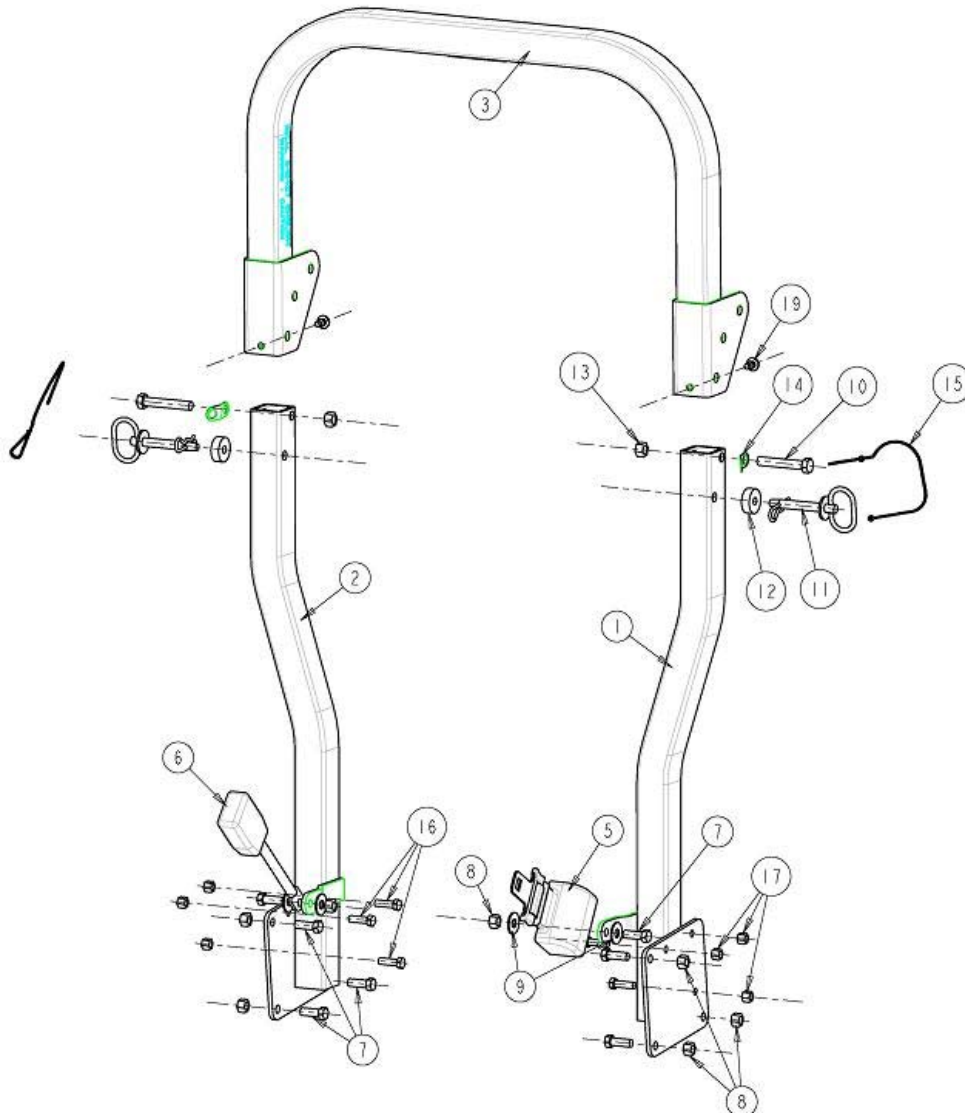
- DO NOT OPERATE MACHINE ON STEEP SLOPES OR NEAR DROP OFFS
- ALWAYS USE SEAT BELTS
- AVOID SHARP AND/OR QUICK TURNS
- DO NOT EXCEED THE MACHINE WEIGHT RATING OF THE ROPS

**WARNING**

- ROLLOVER MAY CAUSE PERMANENT INJURY OR DEATH.**
- ROPS RAISES THE CENTER OF GRAVITY AND REDUCES STABILITY ON SLOPES.
  - SUDDEN STARTS OR TURNS ON RAMPS OR SLOPES CAN CAUSE OVERTURN.
  - USE GREATER CARE ON RAMPS AND AS SLOPES INCREASE.

## Parts list

ITEM	QTY	PART NO.	DESCRIPTION
1	1	98210002	WZ ROPS LEG WELDMENT, LH
2	1	98210003	WZ ROPS LEG WELDMENT, RH
3	1	98210004	WZ ROPS CENTER WELDMENT
4	1	98210005	WZ ROPS HARDWARE KIT
5	1	98210006	WZ ROPS SEAT BELT RETRACTOR
6	1	98210007	WZ ROPS SEAT BELT BUCKLE
7	8	11990093	HHCS, 7/16-14NC x 1.25 LG GR 5
8	8	12990009	HEX NYLOCK NUT, 7/16-14NC GR 5
9	4	13990002	FLAT WASHER, 7/16
10	2	3-10131	HHCS, 1/2-13NC x 3.00 LG GR 5
11	2	98210008	WZ ROPS LOCKING PIN
12	2	98210009	WZ ROPS FOAM WASHER
13	2	3-10485	HEX NUT, CENTERLOCK, 1/2-13NC
14	2	98210010	WZ ROPS LANYARD RETAINER
15	2	98210011	WZ ROPS NYLON LANYARD
16	6	11990032	HHCS, 3/8-16NC x 1.25 LG GR 5
17	6	12990020	HEX NYLOCK NUT, 3/8-16NC GR 5
18	1	98210012	WZ ROPS MOUNTING INSTRUCTIONS
19	1	98210012	WZ ROPS BUMPER

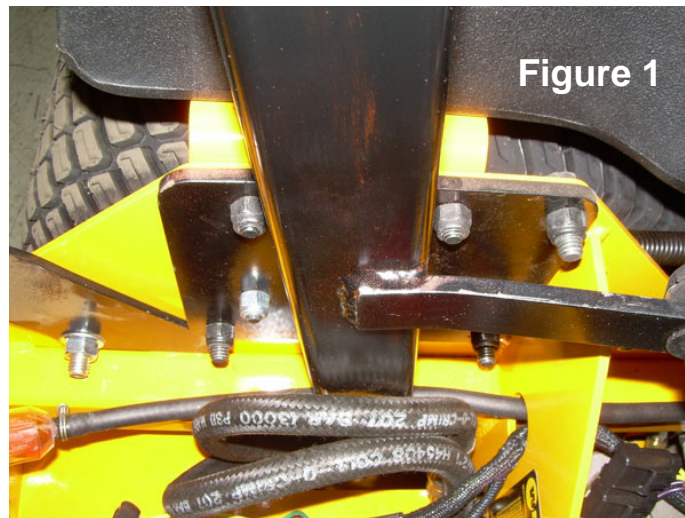


## **Machine Preparation**

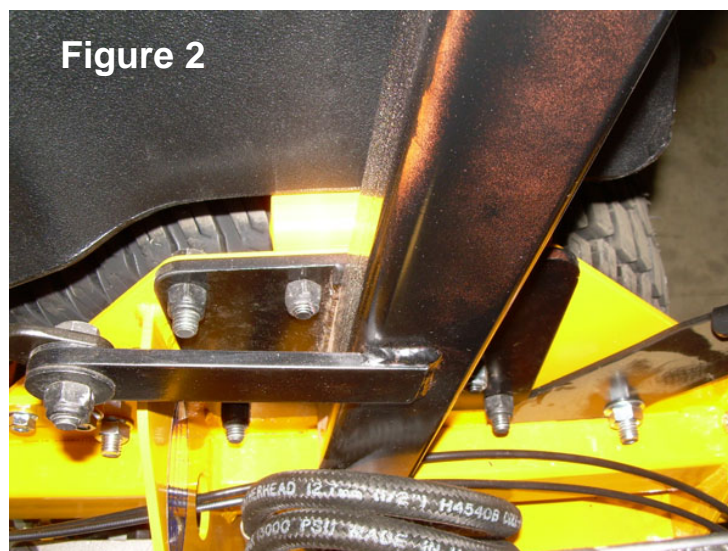
1. Park machine on a level surface and set brake.
2. Remove ROPS and hardware from shipping box and identify all parts using the parts list noted above.

## **Lower ROPS Leg Tube Installation**

3. Jack and secure rear of mower and remove rear tires.
4. Remove left side rear fuel tank bracket bolts. Support tank.
5. Place LH leg weldment against LH machine frame mounting location.
6. Secure using (3) 7/16-14NC x 1.25" long hex head bolts, (3) 7/16-14NC nylock hex nuts, (3) 3/8-16NC x 1.25" long hex head bolts and (3) 3/8-16NC nylock hex nuts. Tighten bolts and nuts later in these instructions. See Figure 1.
7. Loosen high pressure hoses at the pump and swivel away from LH leg weldment.

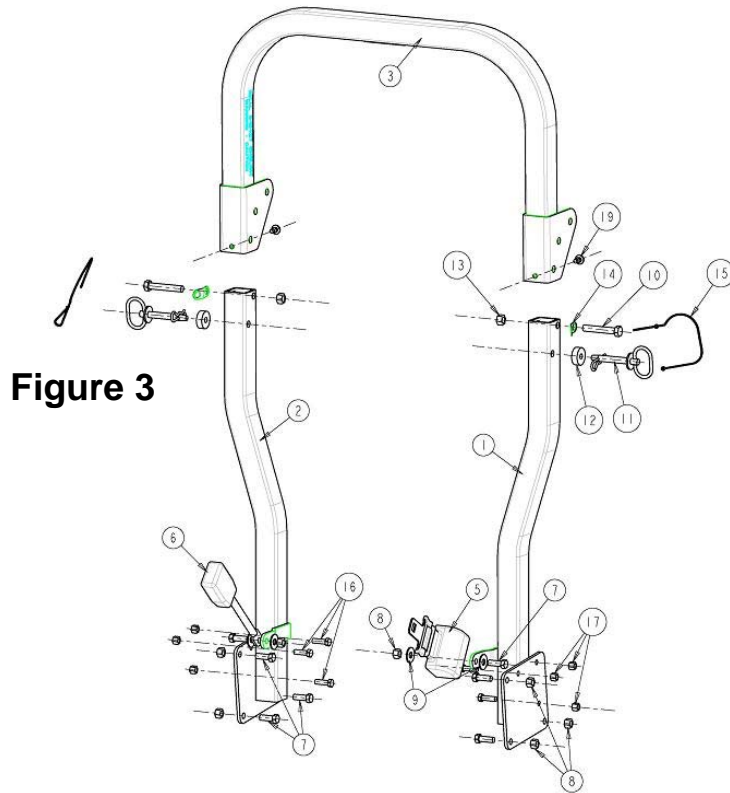


8. Remove right side rear fuel tank bracket bolts. Support tank.
9. Repeat step 5-7 for installing RH leg weldment to RH side of machine frame mounting location. See figure 2.



## Upper ROPS Hoop Installation

10. Install upper roll bar hoop assembly. Secure each side of hoop with (1)  $\frac{1}{2}$ -13NC x 3.00" long hex head bolt, (1) pin retainer washer and (1)  $\frac{1}{2}$ -13NC center locking hex nut, into the upper mount hole of the hoop bracket. Tighten only until the nut makes contact with the hoop bracket. Do not over tighten. Hoop should pivot freely up and down. See Figure 3.
11. Install (1) EPDM washer onto each hitch pin. Position the top hoop into the up-right position and insert hitch pins. See Figure 3.



**Figure 3**

12. Attach (1) nylon lanyard to the handle part of each hitch pin. Insert one end of the lanyard through the retaining washer and attach to hitch pin spring clip to the eye in the lanyard. Install the spring into the hitch pin. See Figures 4, 5 and 6.



**Figure 4**



**Figure 5**



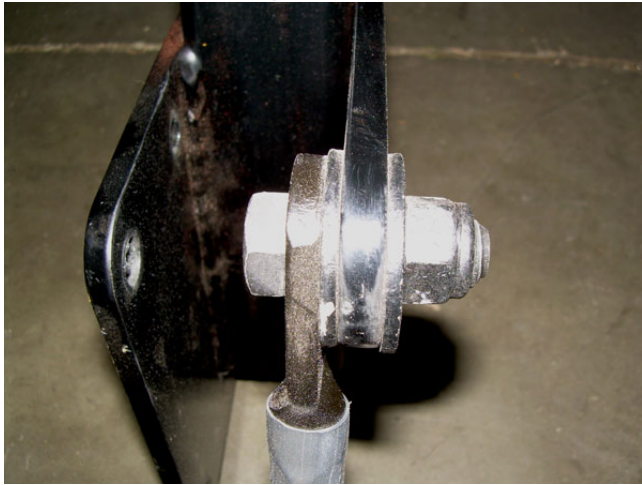
**Figure 6**

13. Torque 7/16" lower leg mounting hardware to 59 ft-lbs and 3/8" hardware to 37 ft lbs.

### **Seatbelt Installation**

14. Secure retractable seat belt using (2) 7/16-14NC x 1.25" long hex head bolts, (4) 7/16" flat washers and (2) 7/16-14NC nylock hex nuts. See figures 7 and 8.

**Figure 7**



**Figure 8**



## **Wright Manufacturing, Inc.**

4600X Wedgewood Boulevard

Frederick, MD 21703

<http://www.wrightmfg.com>